

SURGiNG

紹 鑫 實 業



Ceramic Tube Fuse

电力电子保险丝

6HV Series

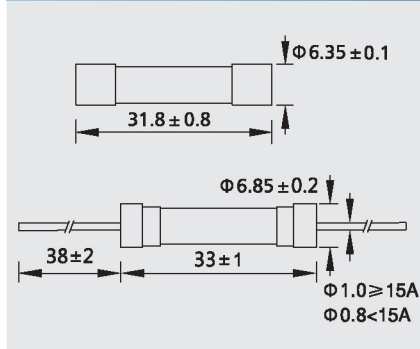
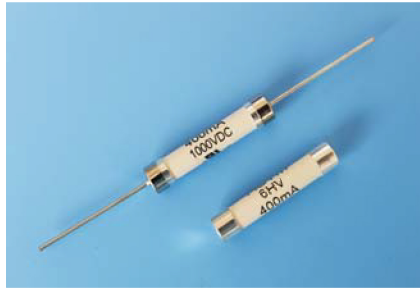


6HV $\Phi 6.35 \times 32$ RoHS Compliant



陶瓷保险丝管

Ceramic Tube Fuse 1000V/660V/600V



测试标准:

Testing Standard:
UL248-1 UL248-14

额定分断能力:

Interrupting Rating:
10K Amperes at 600V/1000V DC
1000 Amperes at 660V AC/DC

工作温度:

Operating Temperature:
 $-55^{\circ}C \sim +125^{\circ}C$

材料:

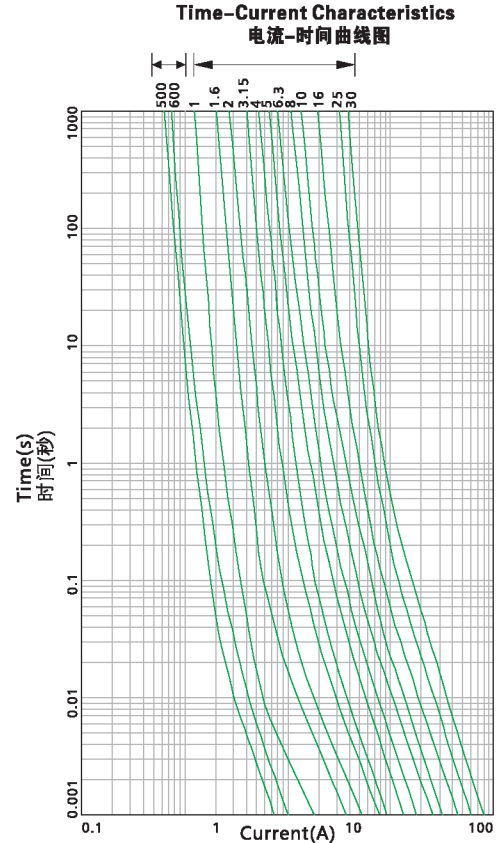
Materials:
End cap: nickel plated brass
Ceramic tube: ceramic
Lead wire: tinned copper wire
Inner cap: silver plating

焊接方法:

Soldering Method:
Wave soldering: $260^{\circ}C$, 10s max
Manual soldering: $350^{\circ}C$, 5s max

电气特性: Electrical Characteristics

额定电流的% % of Ampere Rating	熔断时间 Opening Time
100%	4 hours Min(大于4小时)
250%	120 s Max(小于120秒)
1000%	10 ms Min(大于10毫秒)



目录编号: Catalog No.M:1000V L:660V K:600V

带引线产品目录编号后加"P":Suffix"P"for Lead Type After Catalog No.

目录编号 Catalog No.	额定电流 Ampere Rating	额定电压 Voltage Rating	熔化热能 ² Melting Integral (A ² .S)	认证 Approvals
				● 表示已获认证 ● 表示认证中
6HV0200M/L/K	200mA	1000V/660V/600V	0.003	●
6HV0250M/L/K	250mA	1000V/660V/600V	0.008	●
6HV0400M/L/K	400mA	1000V/660V/600V	0.05	●
6HV0500M/L/K	500mA	1000V/660V/600V	0.10	●
6HV0600M/L/K	600mA	1000V/660V/600V	0.16	●
6HV0800M/L/K	800mA	1000V/660V/600V	0.3	●
6HV1100M/L/K	1A	1000V/660V/600V	0.4	●
6HV1125M/L/K	1.25A	1000V/660V/600V	1.0	●
6HV1160M/L/K	1.6A	1000V/660V/600V	3.2	●
6HV1200M/L/K	2A	1000V/660V/600V	5.0	●
6HV1250M/L/K	2.5A	1000V/660V/600V	8.0	●
6HV1315M/L/K	3.15A	1000V/660V/600V	13	●
6HV1400M/L/K	4A	1000V/660V/600V	20	●
6HV1500M/L/K	5A	1000V/660V/600V	34	●
6HV1600M/L/K	6A	1000V/660V/600V	58	●
6HV1800M/L/K	8A	1000V/660V/600V	97	●
6HV2100M/L/K	10A	1000V/660V/600V	204	●
6HV2120M/L/K	12A	1000V/660V/600V	280	●
6HV2160M/L/K	16A	1000V/660V/600V	387	●
6HV2200M/L/K	20A	1000V/660V/600V	540	●
6HV2250M/L/K	25A	1000V/660V/600V	980	●
6HV2300M/L/K	30A	1000V/660V/600V	1843	●
6HV2350M/L/K	35A	1000V/660V/600V	2315	●
6HV2400M/L/K	40A	1000V/660V/600V	3520	●